

# SSFA comparison

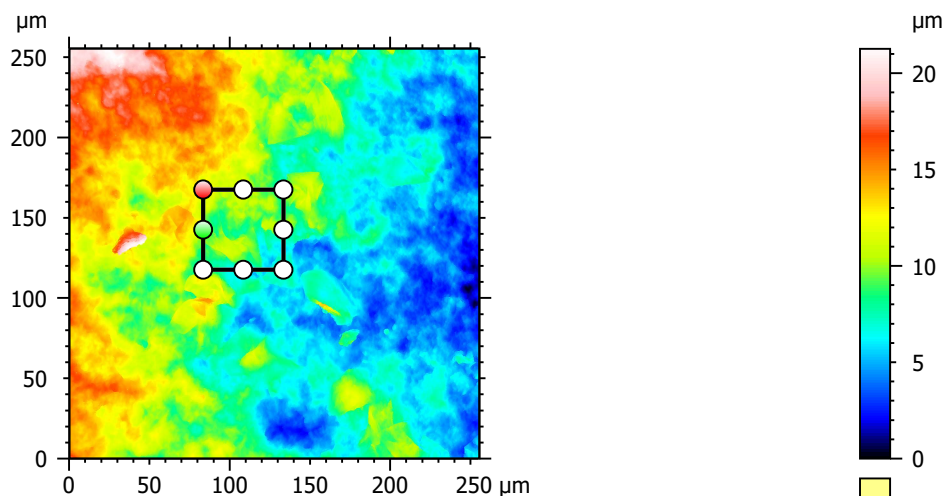
Template to process all lithic surfaces acquired with the Zeiss LSM 800 with the 50x/0.95 objective.

## A. Processing

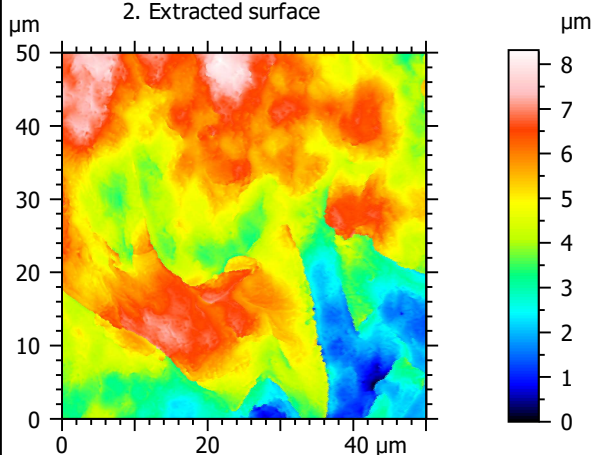
### Identity card

Name:	FLT3-13_LSM2_50x-0.95_20190730_Area1-trial2_Topo		
File path:	D:\Data\3Ddata\SSFA\Lithics\Original surfaces\FLT3-13_LSM2_50x-0.95_20190730_Area1-trial2_Topo.sur		
Created on:	7/30/2019 10:35:58 AM		
Studiable type:	Surface		
Axis:	X		
Length:	255.5	µm	
Size:	3000	points	
Spacing:	0.08519	µm	
Axis:	Y		
Length:	255.5	µm	
Size:	3000	points	
Spacing:	0.08519	µm	
Axis:	Z		
Layer type:	Topography		
Length:	21.26	µm	
Size:	65532	digits	
Spacing:	0.0003245	µm	
NM-points ratio:	0.1382 % (12440 Pts)		

### 1. Acquired surface

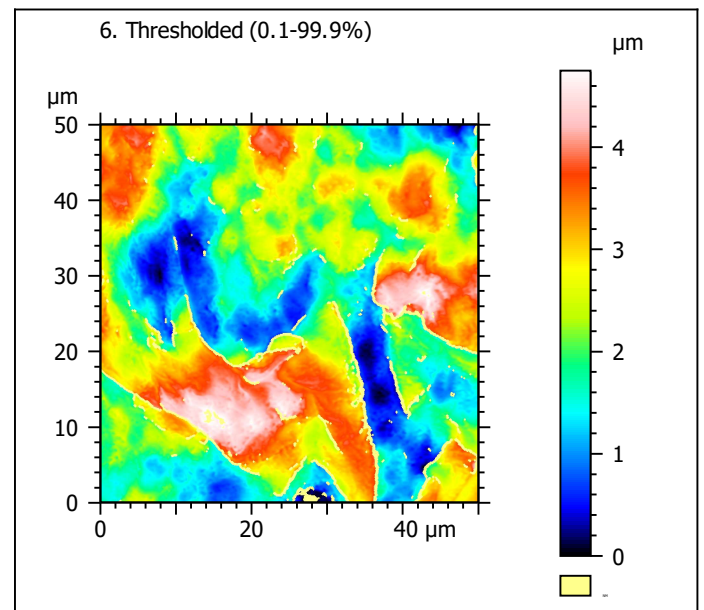
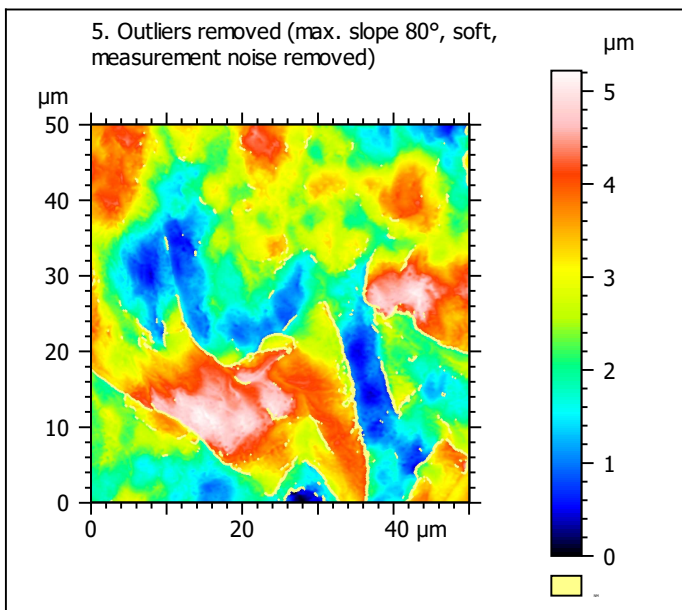
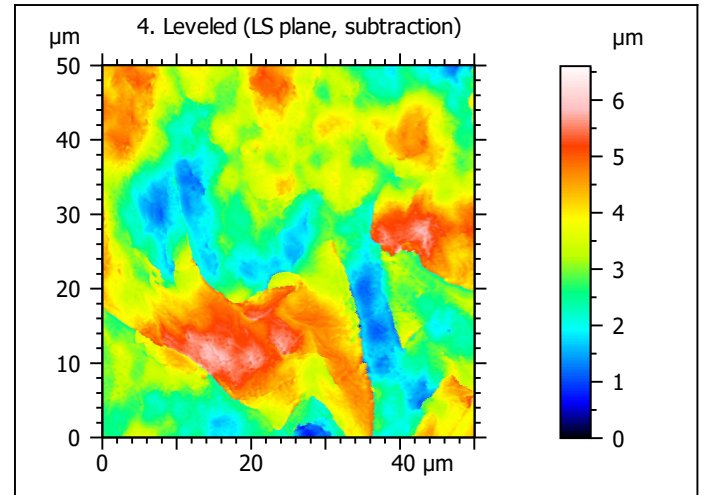
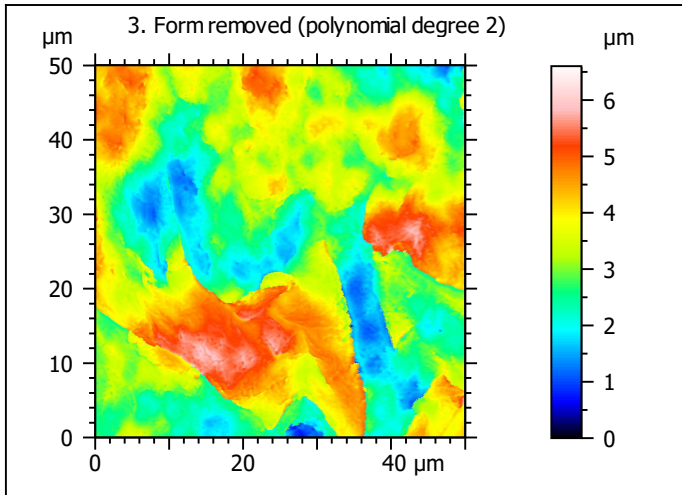


### 2. Extracted surface



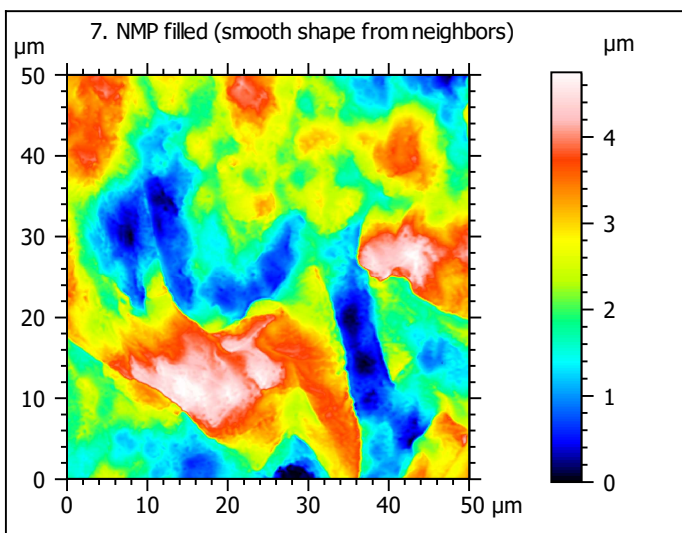
### Identity card

Name:	FLT3-13_LSM2_50x-0...opo > Extracted area		
Axis:	X		
Length:	50.00	µm	
Size:	588	points	
Axis:	Y		
Length:	50.00	µm	
Size:	588	points	
Axis:	Z		
Layer type:	Topography		
Length:	8.314	µm	
Size:	25623	digits	
NM-points ratio:	0.000 % (0 Pts)		

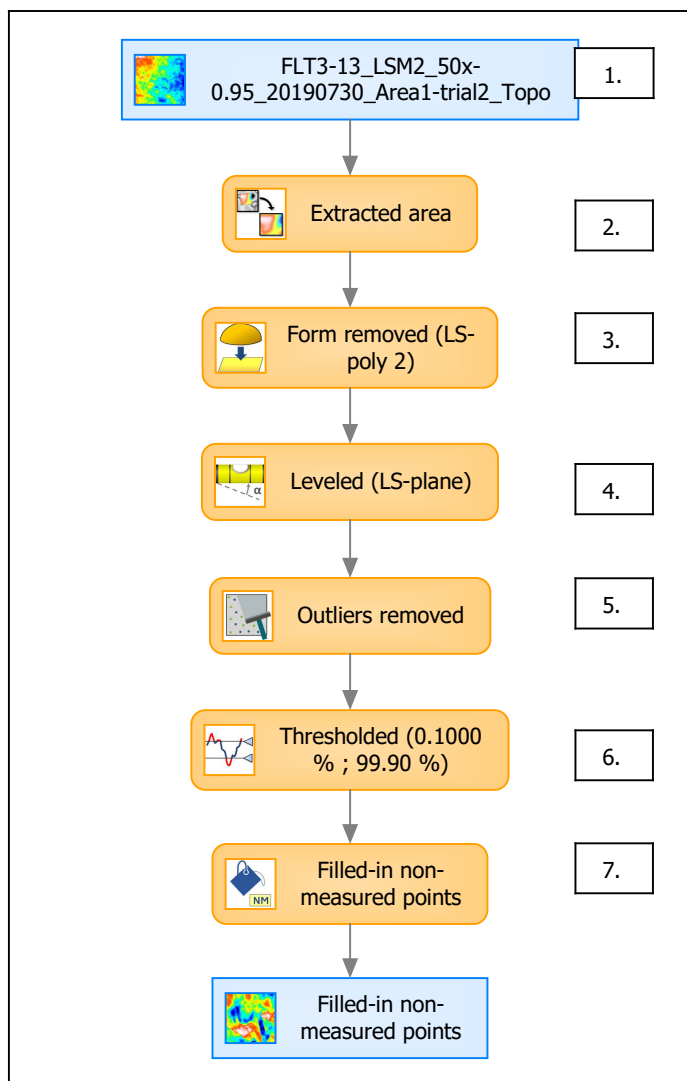


Identity card	
Name:	FLT3-13_LSM2_50x-0...e) > Outliers removed
Axis:	Z
NM-points ratio:	4.254 % (14707 Pts)

Identity card	
Name:	FLT3-13_LSM2_50x-0...0.1000 % ; 99.90 %)
Axis:	Z
NM-points ratio:	4.445 % (15367 Pts)



## B. Summary



### Identity card

Name:	FLT3-13_LSM2_50x-0.95_20190730_Area1-trial2_Topo > Extract...resholded (0.1000 % ; 99.90 %) > Filled-in non-measured points		
Studiable type:	Surface		
<b>Axis:</b>	<b>X</b>		
Length:	50.00	µm	
Size:	588	points	
Spacing:	0.08519	µm	
<b>Axis:</b>	<b>Y</b>		
Length:	50.00	µm	
Size:	588	points	
Spacing:	0.08519	µm	
<b>Axis:</b>	<b>Z</b>		
Layer type:	Topography		
Length:	4.750	µm	
Size:	14638	digits	
Spacing:	0.0003245	µm	

